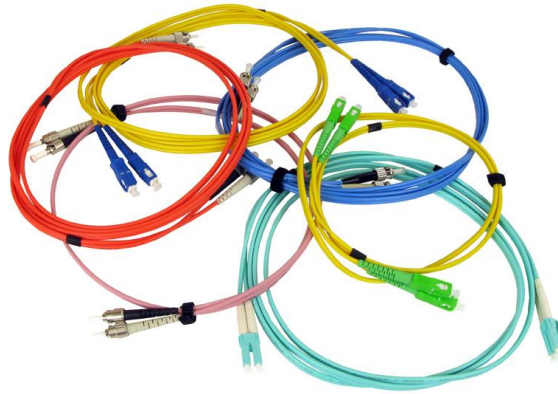


Fiber Patchcord

You Yuan Indoor Duplex Fiber Patchcord

Description:

Fiber optic pigtailed are ideal for supporting fiber optic applications in high-speed telecom networks. They are manufactured and tested to TIA 604 (FOCIS), IEC 61754 and YD/T industry standards. This document mainly describes the technical standards of You Yuan duplex jumpers. Duplex jumpers transmit signals with more channels and save space in the best possible way. OS2/OM1/OM2/OM3/OM4/OM4 fiber types are available for Gigabit Ethernet, 10 Gigabit Ethernet, and high-speed Fiber Channel. Each terminal is tested against strict parameters to ensure the highest network performance.



Application:

- FTTH Networks.
- LAN/WAN/MAN Networks.

Advantages:

- High quality zirconia ferrules.
- High return loss.
- Low Insertion loss.
- Good repeatability and interchangeability.
- LC/SC/ST/FC/LSH/MTRJ/MU connectors with standard boots are available.
- Flame-retardant, rugged and durable jacket.
- G652D/G657A1/G657A2/G657B3 are available.
- Factory terminated and tested for insertion loss, return loss and end face.

Technician Parameter:

Item	You Yuan Indoor Duplex Fiber Patchcord
Connector Type on both end	LC/SC/ST/FC/LSH/MTRJ/MU Duplex
Polish Type	PC/UPC/APC
Cable Outer Diameter	1.6/2.0/3.0mm
Fiber Count	Duplex
Cable Jacket	PVC/LSZH/OFNP
Fiber Grade	SM:G.657.A1/G.657.A2/G.657.B3;MM:OM1/OM2/OM3/OM4/OM5
Connector Insertion Loss	LC/SC/ST/FC/LSH/MU/MTRJ \leq 0.3dB
Connector Return Loss	SMF: UPC \geq 50, APC \geq 60 (LC/SC/ST/FC/MU/MTRJ), UPC \geq 55, APC \geq 75 (LSH) MMF: UPC \geq 30 (LC/SC/ST/FC/LSH/MU), UPC \geq 35 (MTRJ)
Interchangeability	\leq 0.2dB
Vibration	\leq 0.2dB
Operating Temperature	-20~70°C
Storage Temperature	-40~80°C